

Eden Research Laboratory

To: Duane Buelow

Date: July 30, 2012

Update

From: Thomas Poth

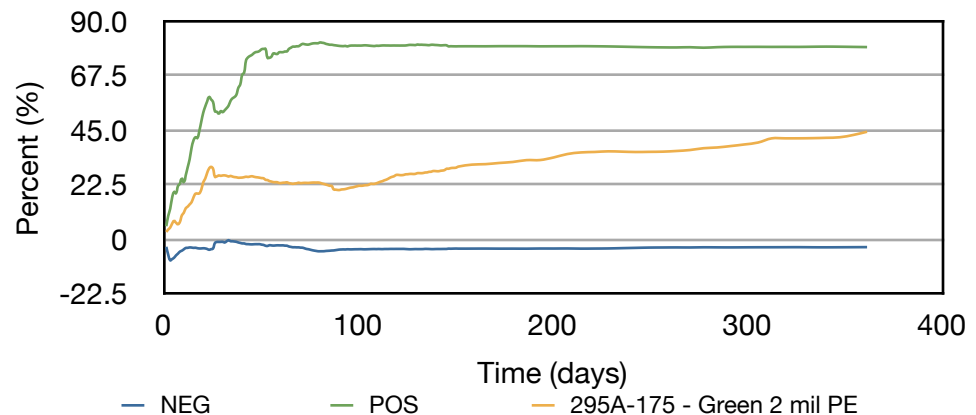
Number of pages including cover: 2

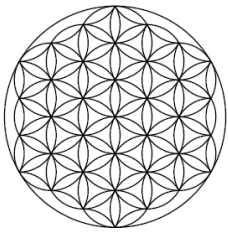
Regarding: ASTM D5511 Status Update for PP Plant Package using Eco-One EG45 – 361 Days

2111 Menaul NE, Suite A
 Albuquerque, NM 87107
 T 505.508.3994
 M 505.550.9316
 thomas.poth@edenresearchlab.com

	Inculum	Negative	Positive	295A - 175 - Green 2 mil PE
Cumulative Gas Volume (mL)	6913.2	7601.1	16195.6	19309.8
Percent CH ₄ (%)	50.7	44.4	47.0	41.0
Volume CH ₄ (mL)	3505.5	3377.7	7608.4	7920.5
Mass CH ₄ (g)	2.50	2.41	5.43	5.66
Percent CO ₂ (%)	32.2	25.3	28.8	32.7
Volume CO ₂ (mL)	2227.2	1924.9	4670.7	6314.8
Mass CO ₂ (g)	4.37	3.78	9.17	12.40
Sample Mass (g)	1,000	10	10	12.0
Theoretical Sample Mass (g)	0.0	8.6	4.4	10.3
Biodegraded Mass (g)	3.07	2.84	6.58	7.63
Percent Biodegraded (%)		-2.7	79.3	44.3
* Adjusted Percent Biodegraded (%)		-3.4	100.0	55.9

Biodegradation

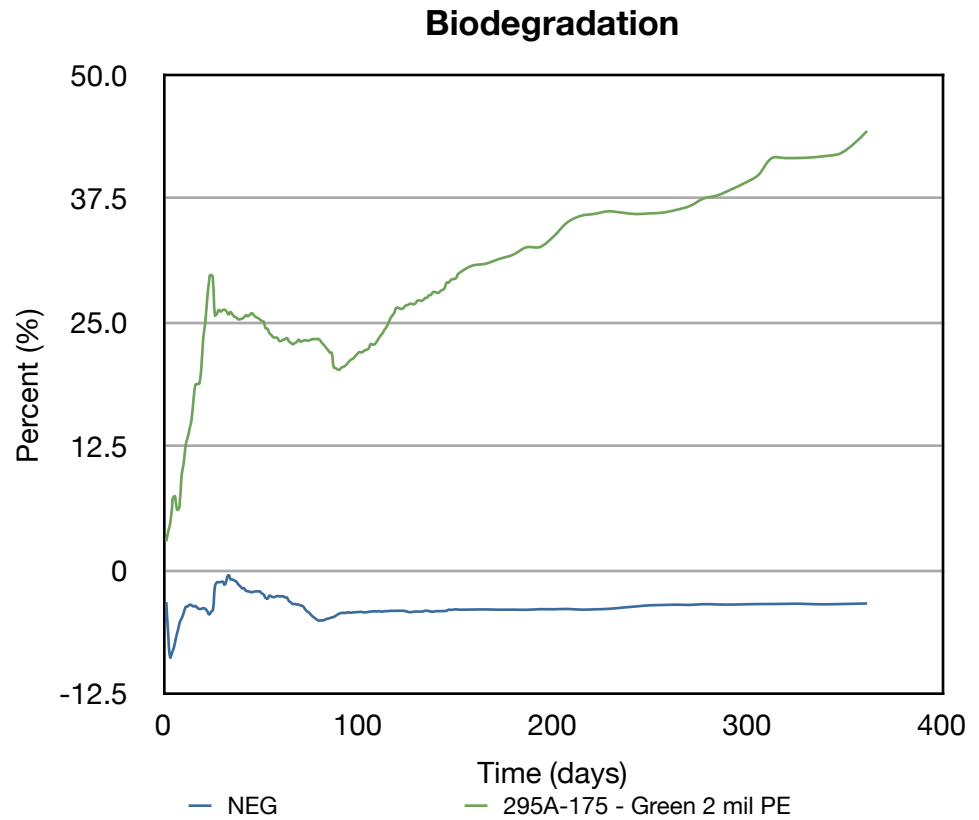




Eden Research Laboratory

Update

2111 Menaul NE, Suite A
Albuquerque, NM 87107
T 505.508.3994
M 505.550.9316
thomas.poth@edenresearchlab.
com



* The adjusted % biodegraded values are for informational purposes. It is not part of the method and will not be reported in the final report.