

Eden Research Laboratory

To: EcoLogic

Date: January 6, 2019

From: Thomas Poth

Number of pages including cover: 2

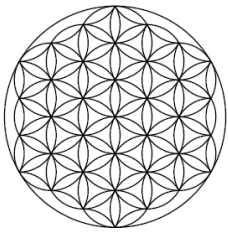
Regarding: ASTM D5511 update for ABS TRAYS samples - 495 days

Update

2111 Menaul NE, Suite A
 Albuquerque, NM 87107
 T 505.508.3994
 M 505.550.9316
 thomas.poth@edenresearchlab.com

	inoculum	Negative	Positive	532 - Control ABS TRAYS 20150408- 532	533 - Treated ABSsample Tray w/2% Eco-One EG55 / 20150408- 533
Cumulative Gas Volume (mL)	2744.0	3066.4	11580.6	4106.0	20369.4
Percent CH ₄ (%)	42.8	44.2	39.9	47.0	53.4
Volume CH ₄ (mL)	1175.2	1354.3	4614.9	1930.9	10876.2
Mass CH ₄ (g)	0.84	0.97	3.30	1.38	7.77
Percent CO ₂ (%)	39.8	38.0	43.1	38.3	36.8
Volume CO ₂ (mL)	1092.9	1164.5	4985.7	1573.6	7505.1
Mass CO ₂ (g)	2.15	2.29	9.79	3.09	14.74
Sample Mass (g)	10	10	10	20.0	20.0
Theoretical Sample Mass (g)	0.0	8.6	4.2	17.1	17.1
Biodegraded Mass (g)	1.22	1.35	5.14	1.88	9.85
Percent Biodegraded (%)		1.6	93.1	3.9	50.4
* Adjusted Percent Biodegraded (%)		1.7	100.0	4.2	54.1

* Outside of the ASTM D5511 method and on the assumption that the positive control (Cellulose) will fully biodegrade, all value have been proportionally adjusted.



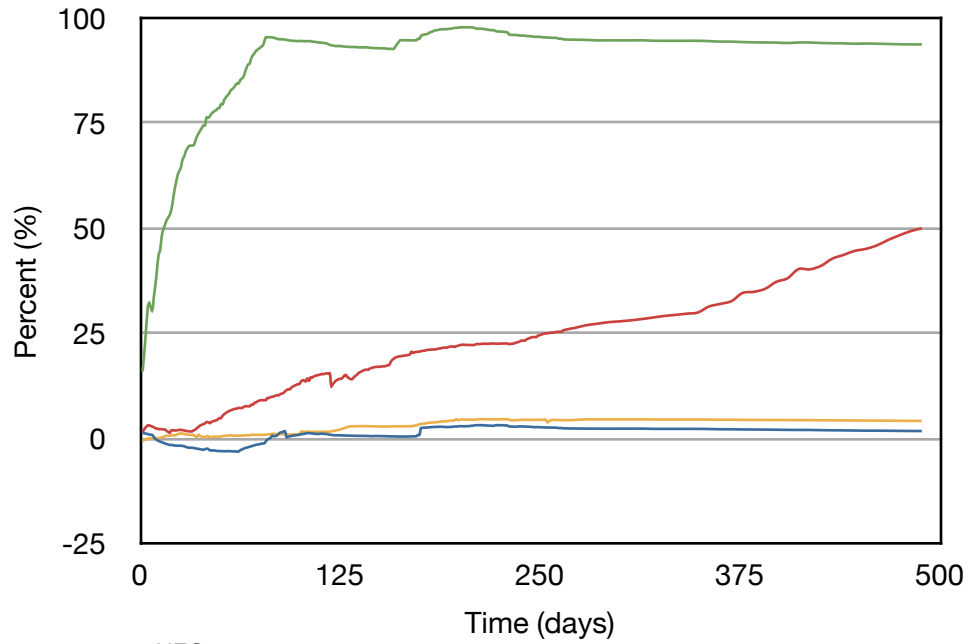
Eden Research Laboratory

Update

2111 Menaul NE, Suite A
Albuquerque, NM 87107
T 505.508.3994
M 505.550.9316

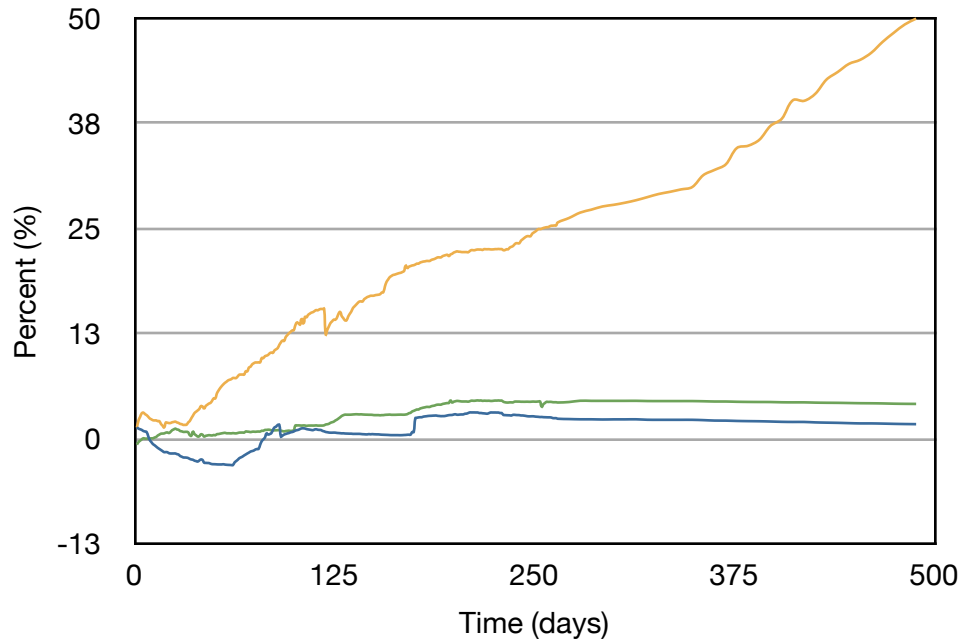
thomas.poth@edenresearchlab.com

Biodegradation



- NEG
- POS
- 532 - Control ABS TRAYS / 20150408-532
- 533 - Treated Test Sample w/2% Eco-One EG55 / 20150408-533

Biodegradation



- NEG
- 532 - Control ABS TRAYS / 20150408-532
- 533 - Treated Test Sample w/2% Eco-One EG55 / 20150408-533