

Eden Research Laboratory

To: Duane Buelow

Date: 2/15/12

Update

From: Thomas Poth

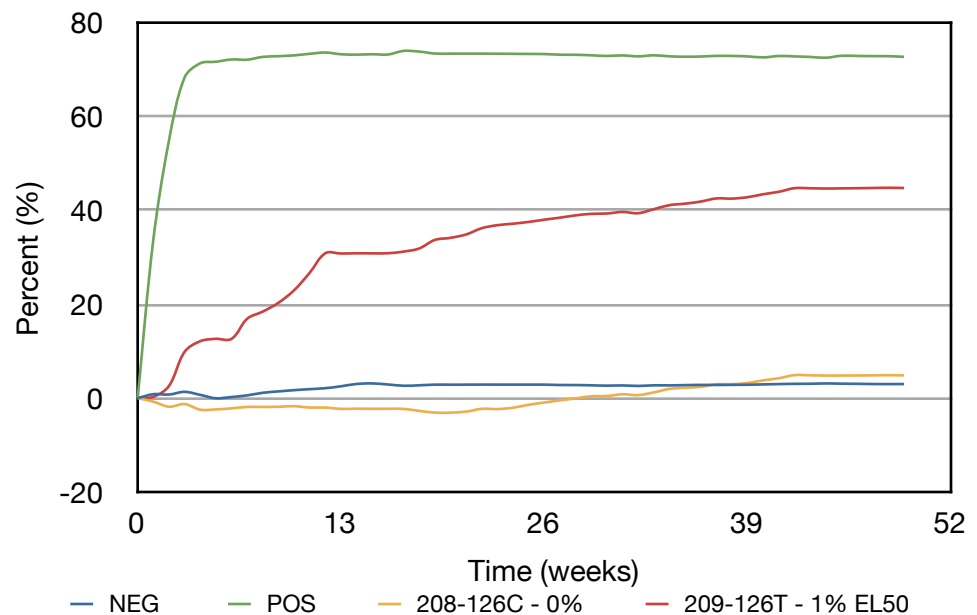
Number of pages including cover: 2

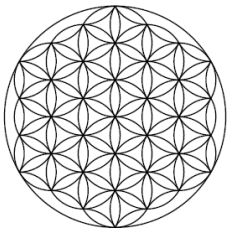
Regarding: Testing as per ASTM D5511 for EcoLogic XPS Samples (49 Weeks)

2111 Menaul NE, Suite A
 Albuquerque, NM 87107
 T 505.508.3994
 M 505.550.9316
 thomas.poth@edenresearchlab.
 com

	Inculum	Negative	Positive	208A - 126C - 0%	209A - 126T - 1% EL50
Cumulative Gas Volume (mL)	4041.2	4851.0	14071.6	5144.0	13377.5
Percent CH ₄ (%)	45.2	44.9	57.4	45.9	47.8
Volume CH ₄ (mL)	1828.0	2179.2	8073.5	2362.4	6390.5
Mass CH ₄ (g)	1.31	1.56	5.77	1.69	4.56
Percent CO ₂ (%)	42.1	35.0	50.4	38.9	36.3
Volume CO ₂ (mL)	1701.2	1698.8	7089.0	2002.4	4853.3
Mass CO ₂ (g)	3.34	3.34	13.92	3.93	9.53
Sample Mass (g)	1,000	10	10	10.0	10.0
Theoretical Sample Mass (g)	0.0	8.6	8.6	9.2	9.2
Biodegraded Mass (g)	1.89	2.08	8.12	2.34	6.02
Percent Biodegraded (%)		2.2	72.7	4.8	44.8
* Adjusted Percent Biode- graded (%)		3.0	100.0	6.7	61.6

Biodegradation



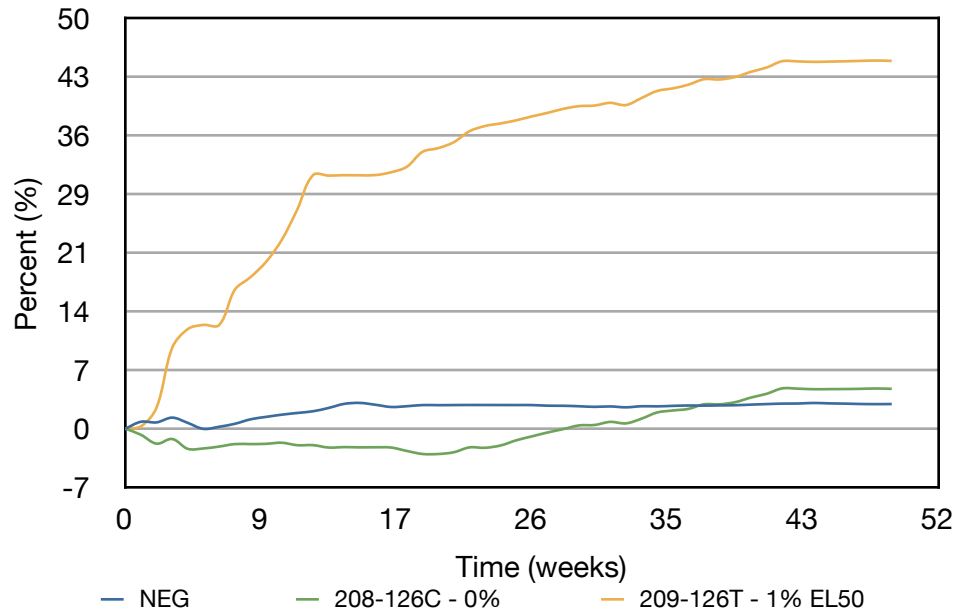


Eden Research Laboratory

Update

2111 Menaul NE, Suite A
Albuquerque, NM 87107
T 505.508.3994
M 505.550.9316
thomas.poth@edenresearchlab.
com

Biodegradation



* Outside of the ASTM D5511 method and on the assumption that the positive control (Cellulose) will fully biodegrade, all value have been proportionally adjusted.